

Sample Standard Reports

Contents

Key features and capabilities Navigation Scorecard & Summary Dashboards Flexible Report Templates

Key features and capabilities

Features:

- Identify patterns and trends
- Normative comparisons
- Configurable dashboard style reports
 - Customize displayed measures, attributes and charts
 - Organized by level of detail and analytic topic

Capabilities:

- On-demand population segmentation filters
- Create and save custom packages of reports
 - Export to PowerPoint and PDF
 - Share and receive saved reports to and from licensed users in your organization and Optum

Navigation

Content and results

- Dashboard content organized by category within Subject areas
- Available content is organized to allow users to quickly view Pages for analysis

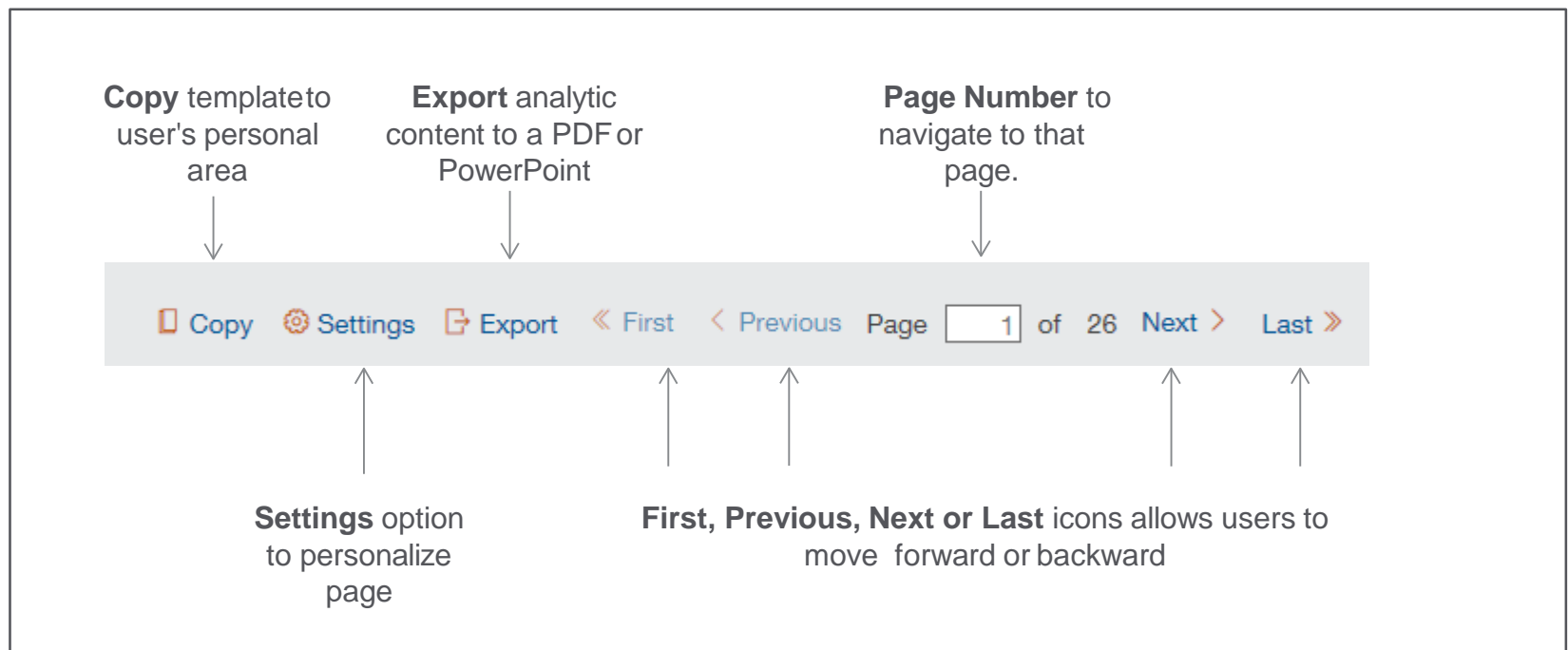
The screenshot displays the Optum Benefits Analytic Manager interface. At the top, the header includes the Optum logo, the text 'Benefits Analytic Manager', and a 'Customer & Dataset' dropdown menu set to 'Demo6' with the date range 'Incur. Jan2016-Dec2017 w/3 mo.run out v12120'. Navigation tabs at the top right include 'Content' (with a dropdown arrow and 'Overview' below it), 'Reports', and 'Utilities'. On the left, a sidebar contains 'Public Books' with sub-items 'Overview', 'Highlights', 'Scorecard & Summaries', 'Mid-Level', 'Health Benefits Management' (highlighted with an orange arrow), 'Details', and 'Topic'. Below this is 'My Books' with 'Books & Views' and an 'Advanced Search' link. The main content area is divided into two panes: 'Categories' (with an orange border and an arrow pointing to the 'Content' pane) and 'Content' (with an orange border). The 'Categories' pane lists 'Overview' and four sub-items: 'Plan Design and Enrollment', 'Network Design & Quality', 'Population Health & Productivity', and 'Population Health & Productivity'. The 'Content' pane lists four items: '1. Group Health Plan Performance Details', '2. Distribution of Group Health Plan Performance Measures', '3. Overview Snapshot', and '4. Drivers of Change'.

Advanced Search supports key word searches for specific report templates (content/pages)

Navigation

Page level options

- **Settings** – configure and personalize
- **Copy** and **Export** – create a personal version and share with others or create hard copy for presentation and distribution outside the application
- Navigate through **Page(s)**



Navigation

Page level settings



Settings allows users to personalize the layout and content for the displayed dashboard (page).

- A personalized page can be reused once saved as a book
- Dynamic per page and can include:
 - **Measures** – add, remove, and change display order
 - **Columns** – select columns to display
 - **Chart** – select type and configure

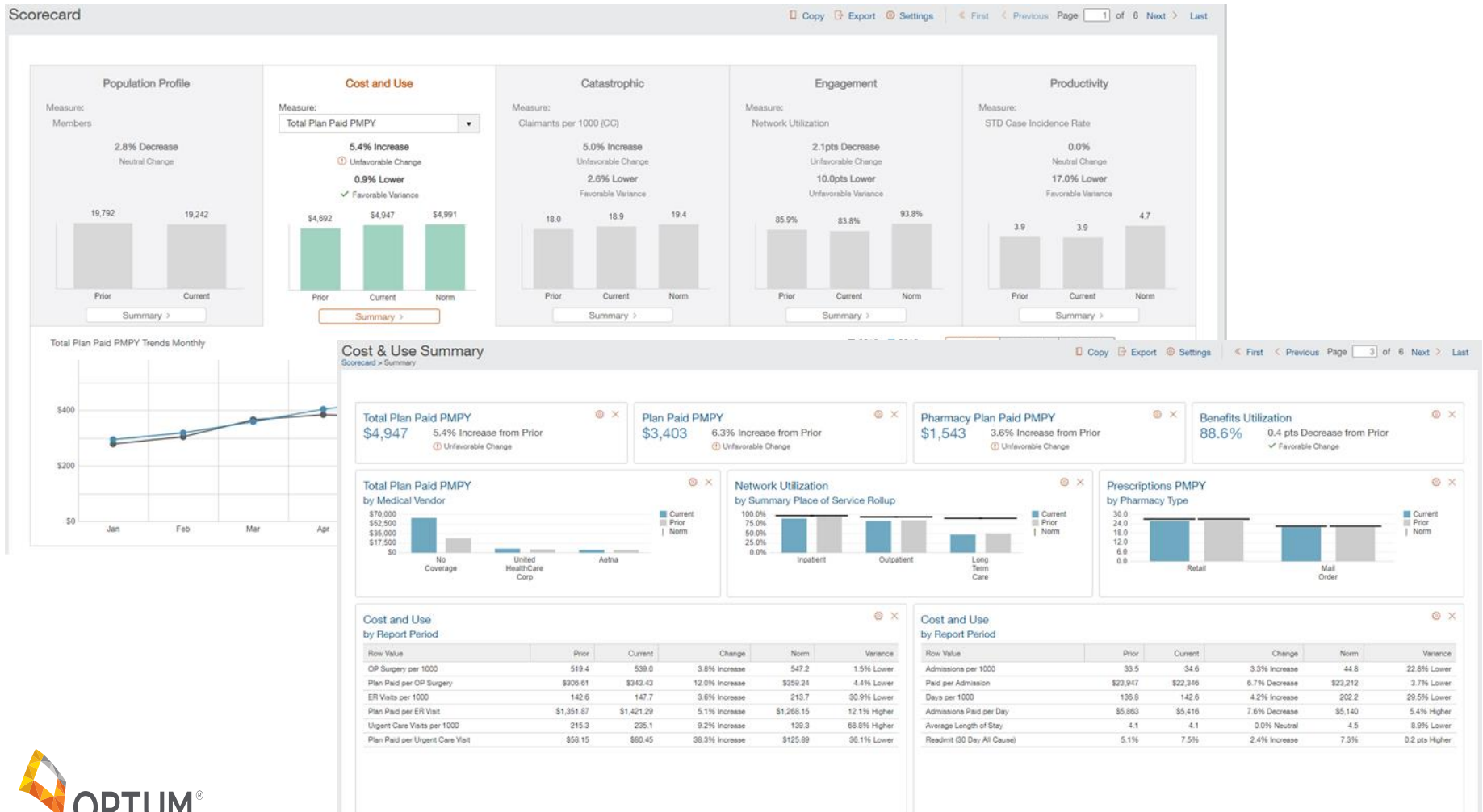
The image displays three overlapping screenshots of the 'Page Options' dialog box, illustrating different configuration sections:

- Top Screenshot (Measures):** Shows the 'Measures' section with a list of available measures (41) on the left and a list of selected measures (16) on the right. The selected measures include: Inpatient Admissions, Admission per 1000, Days per 1000, Admission Paid, Paid per Admission, Admission Paid per Day, and Admission Paid PMPY. Navigation buttons (Up, Down) are visible.
- Middle Screenshot (Columns):** Shows the 'Columns' section with five columns configured: Column 1: Prior, Column 2: Current, Column 3: Change, Column 4: Norm, and Column 5: Variance.
- Bottom Screenshot (Chart):** Shows the 'Chart' section with configuration options: Divide by: Split, Sort by: Value, Filter: Both, and Show Chart: ☒. Save and Cancel buttons are at the bottom.

Scorecard and Summary Dashboards

Scorecard & Summaries

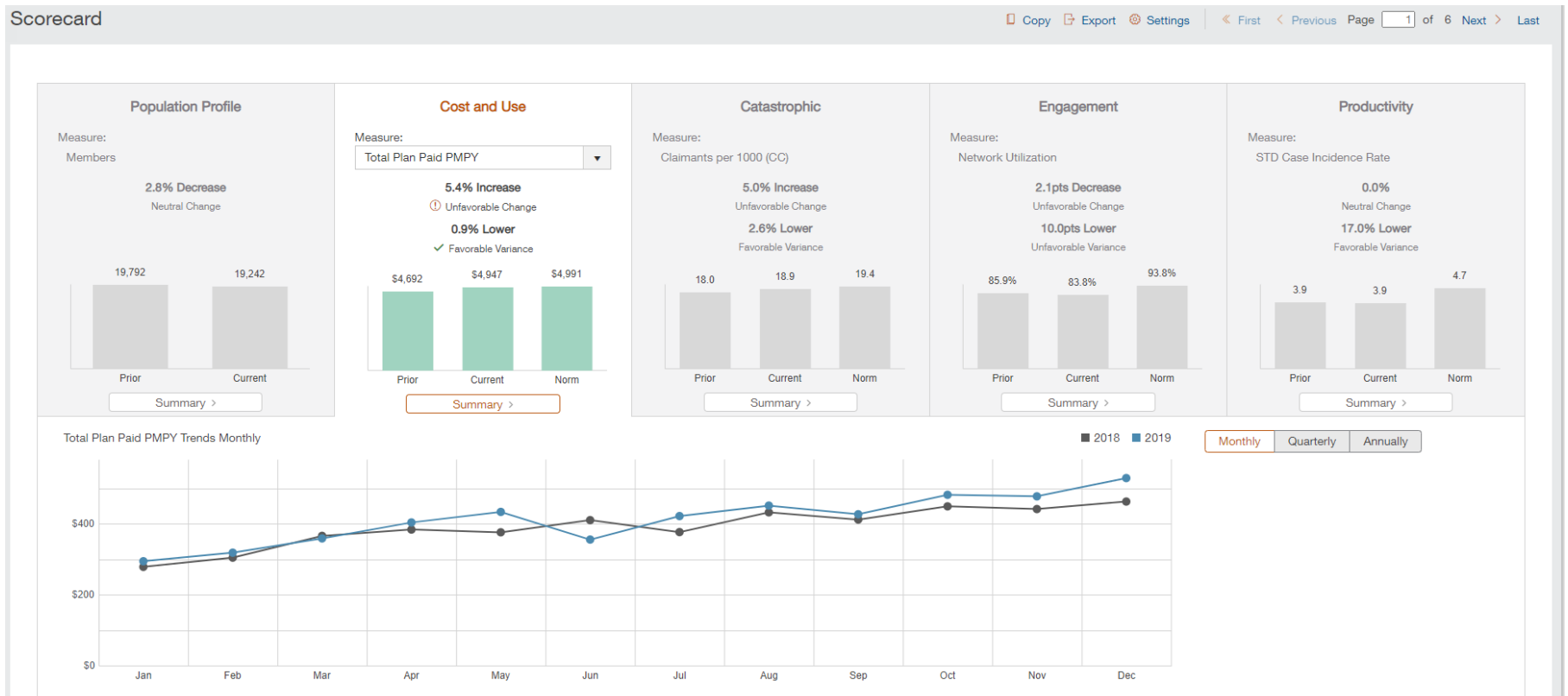
Configurable data visualization pages allowing for a quick view of key measures categorized into analytic topics



Scorecard

Highest level of information

In the default setting, analytic topics are arranged in a recommended viewing order from left to right:



OPTUM®

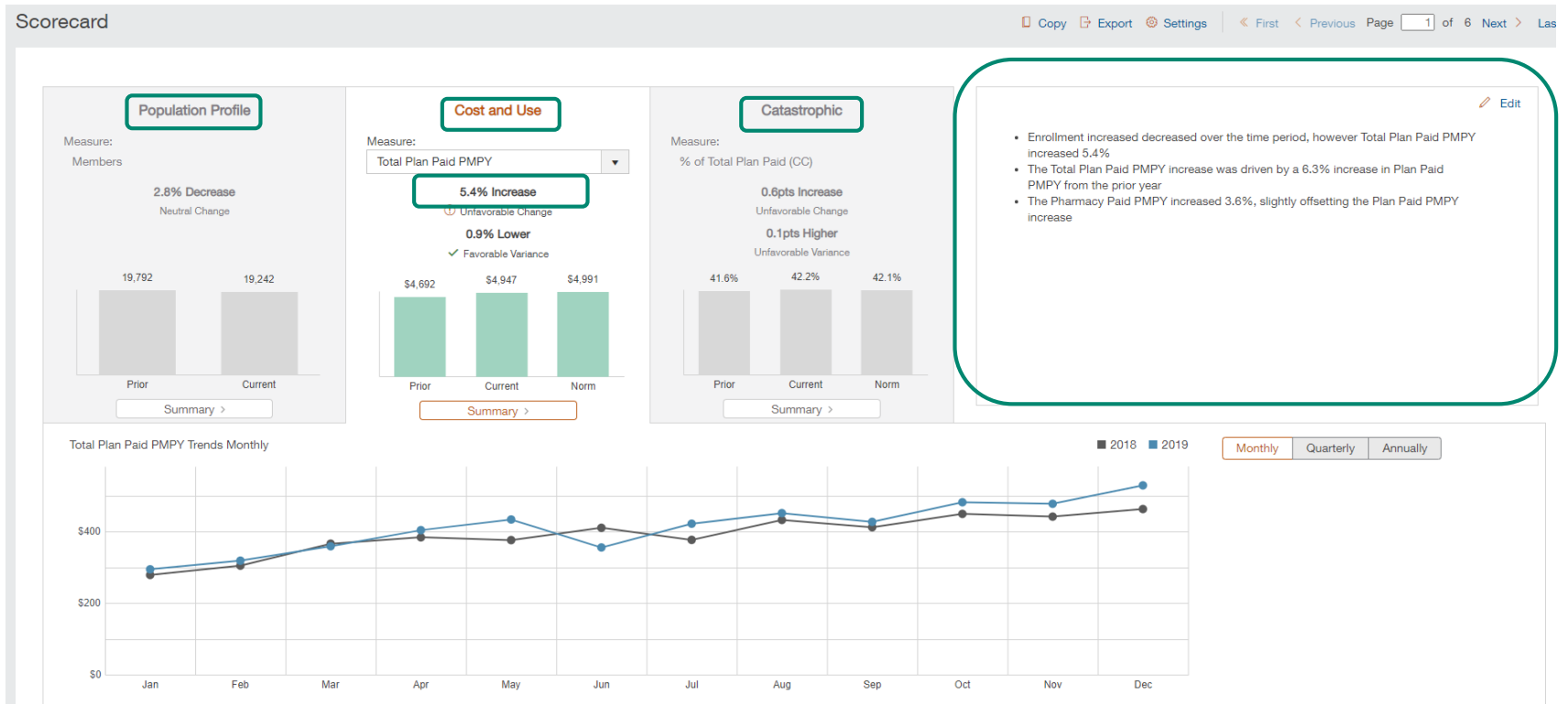
Multiple key measures are available to select from for each analytic topic

© 2021 Optum, Inc. All rights reserved.

Scorecard

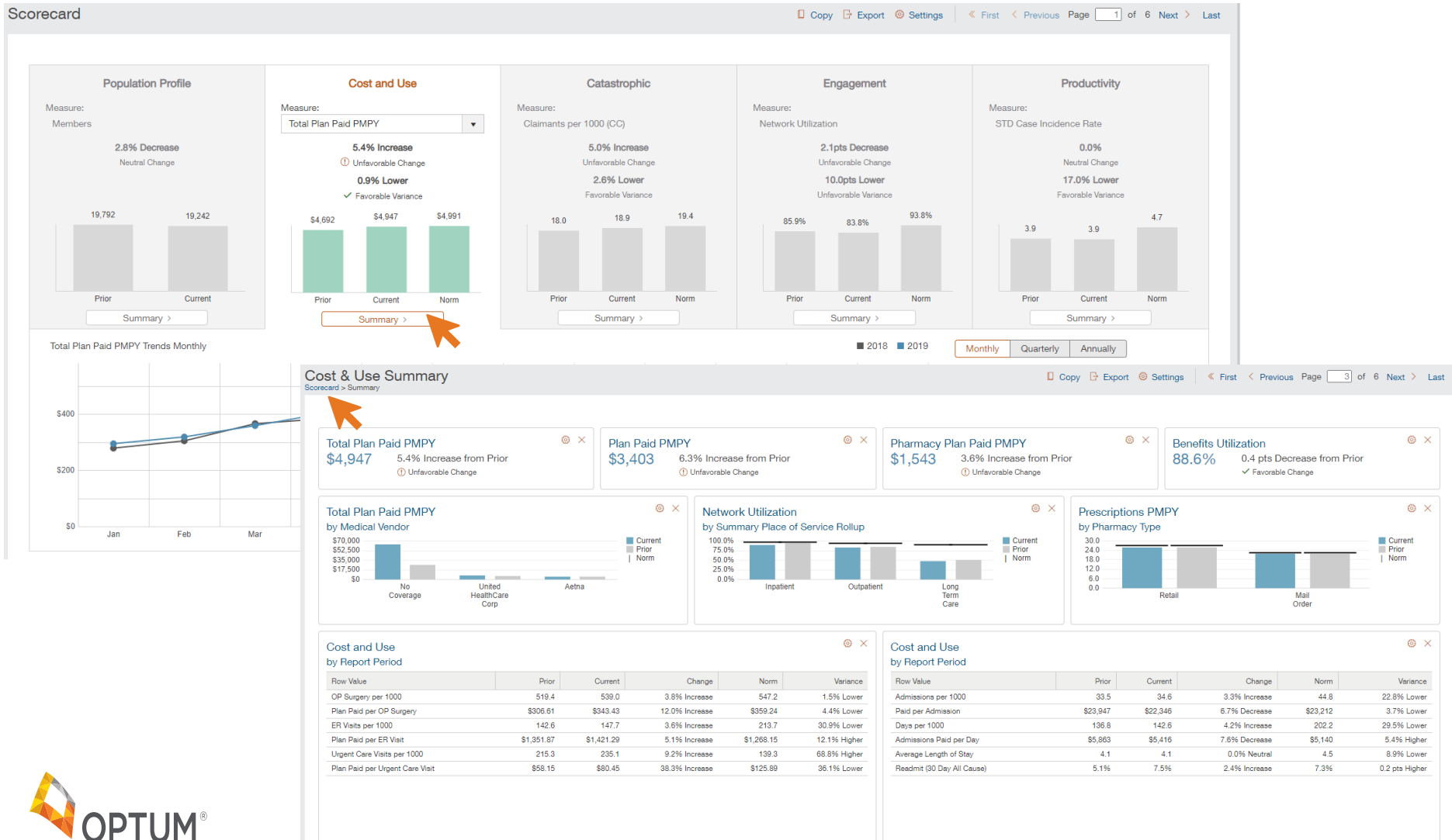
Configurable for your analytic needs

Any combination of topics and measures can be selected to view and save for future use, including custom comments



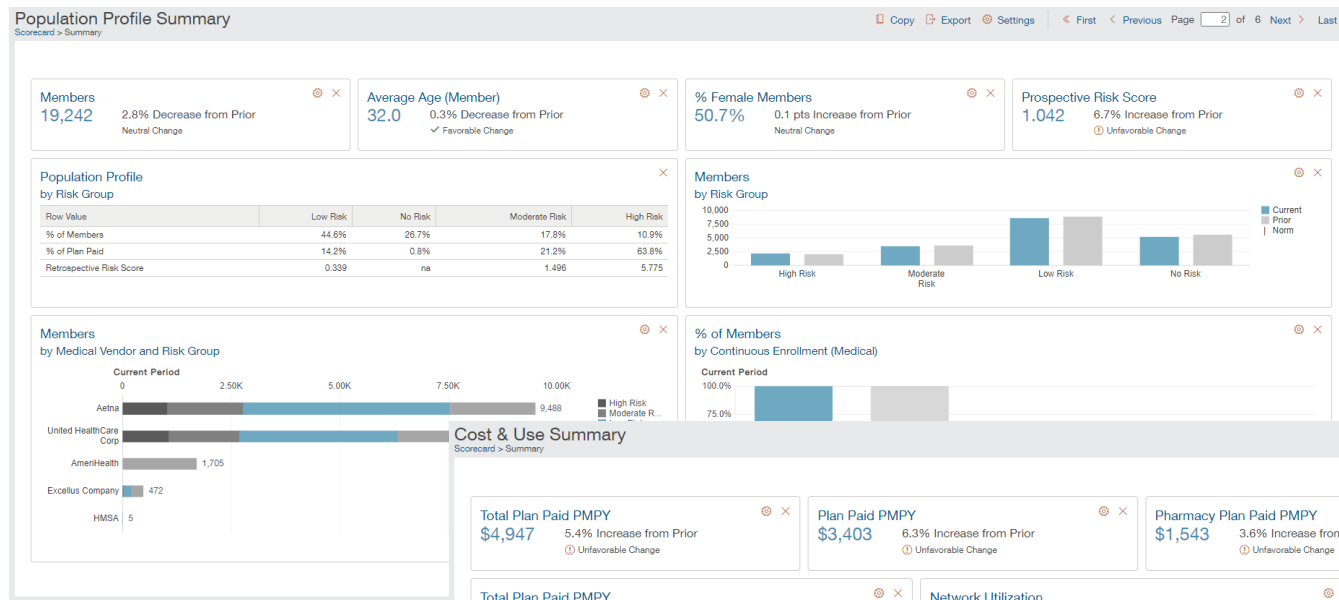
Scorecard and Summaries Navigation

Single click to easily navigate between the tiers



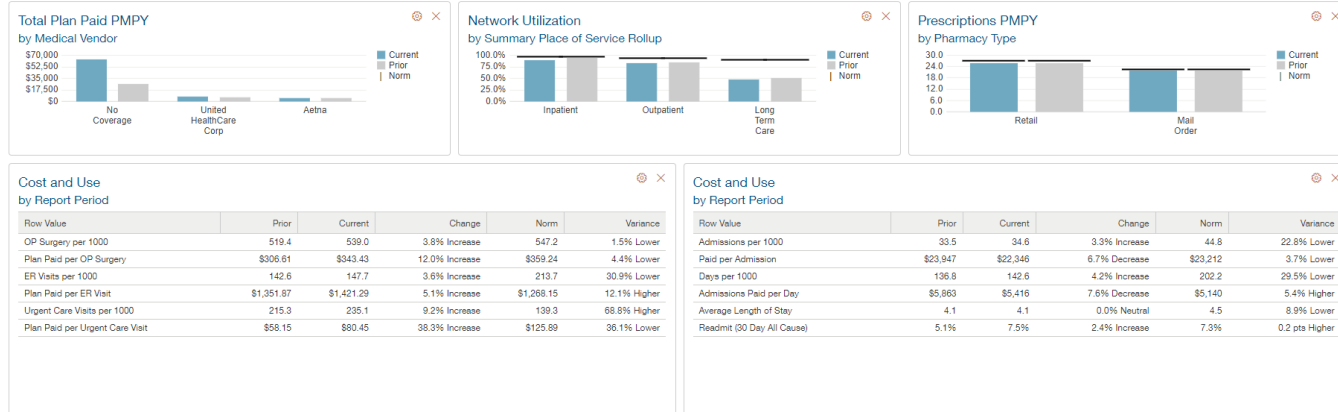
Summary Pages

There is a Summary page for each analytic topic with configurable visuals – examples:



Population Profile

Cost and Use



Summary Page Layout

Each Summary page consists of three rows of content displaying different data visualizations. Various sizes and chart types are available on each row to configure.

Members
75,832 4.2% Decrease from Prior
Neutral Change

Average Age (Member)
32.8 0.0% Decrease from Prior
Neutral Change

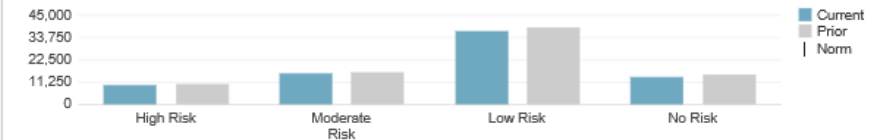
% Female Members
58.8% 0.1 pts Increase from Prior
Neutral Change

Prospective Risk Score
1.102 2.8% Increase from Prior
Unfavorable Change

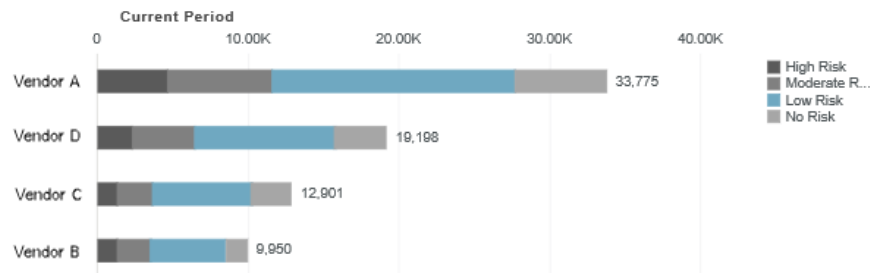
**Population Profile
by Risk Group**

Row Value	Low Risk	No Risk	Moderate Risk	High Risk
% of Members	48.8%	18.0%	20.5%	12.7%
% of Plan Paid	12.7%	1.0%	19.6%	66.6%
Retrospective Risk Score	0.333	na	1.509	5.490

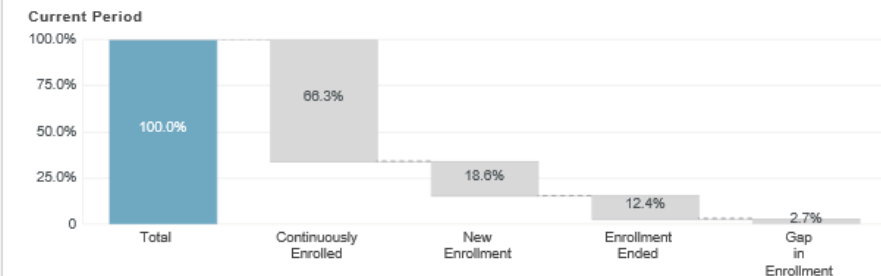
**Members
by Risk Group**



**Members
by Medical Vendor and Risk Group**



**% of Members
by Continuous Enrollment (Medical)**



Core Solution

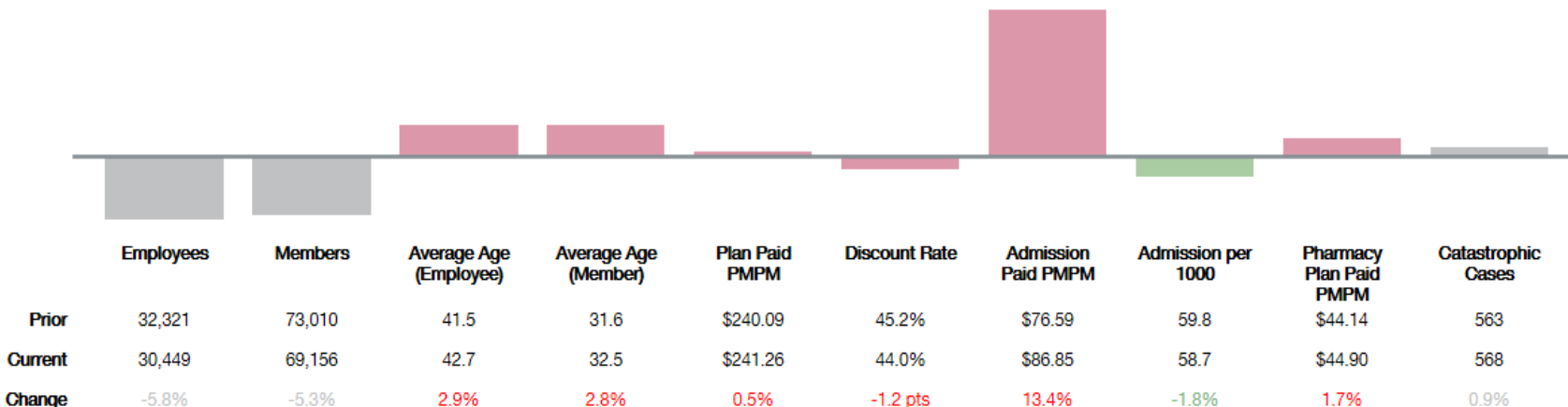
Medical, Drug and Eligibility

Group Health Snapshot

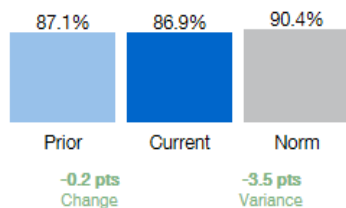
Dashboard

[Share](#)
[Copy](#)
[Settings](#)
[Export](#)
[« First](#)
[Previous](#)
Page of 44
 [Next >](#)
[Last >>](#)

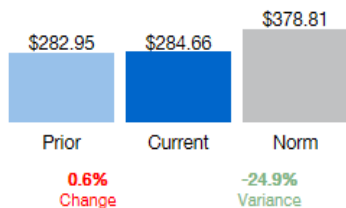
Summary of Changes



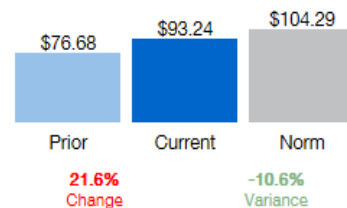
% Using Medical Benefits



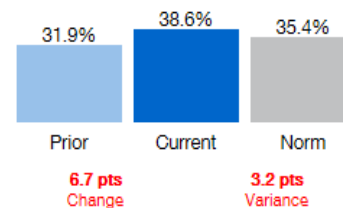
Total Paid PMPM



Paid PMPM (CC)



% of Paid (CC)



KPIs

Integrated key measures with visual alerts



Table

Integrated key measures with favorability icons

Table					
			Copy Export Settings	« First < Previous	Next >
Measure	Prior	Current	Change	Norm	Variance
Catastrophic Case					
% of Total Plan Paid (CC)	45.1%	47.4%	2.3 pts ●	47.0%	0.4 pts ●
Claimants per 1000 (CC)	30.0	29.2	-2.7% ●	28.2	3.5% ●
Pharmacy Plan Paid PMPY (CC)	\$729	\$834	14.4% ●	\$703	18.6% ●
Plan Paid PMPY (CC)	\$2,386	\$2,421	1.5% ●	\$2,409	0.5% ●
Total Plan Paid PMPY (CC)	\$3,115	\$3,255	4.5% ●	\$3,112	4.6% ●
Eligibility					
Average Age (Member)	37.2	37.4	0.5% ●	39.6	-5.6% ●
Average Family Size	2.07	2.05	-1.0% ●	1.89	8.5% ●
Members	31,937	31,626	-1.0% ●	--	--
Episode Risk Group					
Retrospective Risk Score	1.347	1.294	-3.9% ●	1.469	-11.9% ●
Inpatient Admissions					
Admissions per 1000	44.3	41.4	-6.5% ●	52.7	-21.4% ●
Paid per Admission	\$32,258	\$35,141	8.9% ●	\$28,367	23.9% ●
Medical Claim					
Adjusted Plan Paid PMPM	\$329.74	\$331.81	0.6% ●	\$288.65	15.0% ●
Claimants per 1000	1,058	1,040	-1.7% ●	1,047	-0.6% ●
Plan Cost Share (Net)	84.2%	84.7%	0.5 pts ●	83.5%	1.2 pts ●
Plan Paid per Claimant	\$5,034	\$4,954	-1.6% ●	\$4,860	1.9% ●
Plan Paid PMPY	\$5,328	\$5,154	-3.3% ●	\$5,087	1.3% ●
Outpatient Event					
ER Visits per 1000	154.8	130.7	-15.6% ●	216.5	-39.6% ●
Physician Office Visits per 1000	5,550	5,058	-8.9% ●	5,475	-7.6% ●
Plan Paid per ER Visit	\$1,950	\$2,249	15.4% ●	\$1,436	56.6% ●
Plan Paid per Physician Office Visit	\$88.04	\$89.94	2.2% ●	\$95.65	-6.0% ●
Plan Paid per Urgent Care Visit	\$122.93	\$120.83	-1.7% ●	\$132.58	-8.9% ●
Urgent Care Visits per 1000	103.1	102.9	-0.2% ●	139.0	-26.0% ●
Pharmacy Claim					
Adjusted Pharmacy Plan Paid PMPM	\$97.76	\$109.86	12.4% ●	\$87.42	25.7% ●
Pharmacy Plan Cost Share (Net)	89.8%	89.9%	0.1 pts ●	88.6%	1.3 pts ●
Pharmacy Plan Paid PMPY	\$1,580	\$1,706	8.0% ●	\$1,541	10.7% ●
Plan Paid per Prescription	\$203.15	\$219.72	8.2% ●	\$138.61	58.5% ●
Prescriptions PMPY	7.8	7.8	0.0% ●	11.1	-29.7% ●
Specialty % of Pharmacy Plan Paid	52.5%	56.0%	3.5 pts ●	50.8%	5.2 pts ●

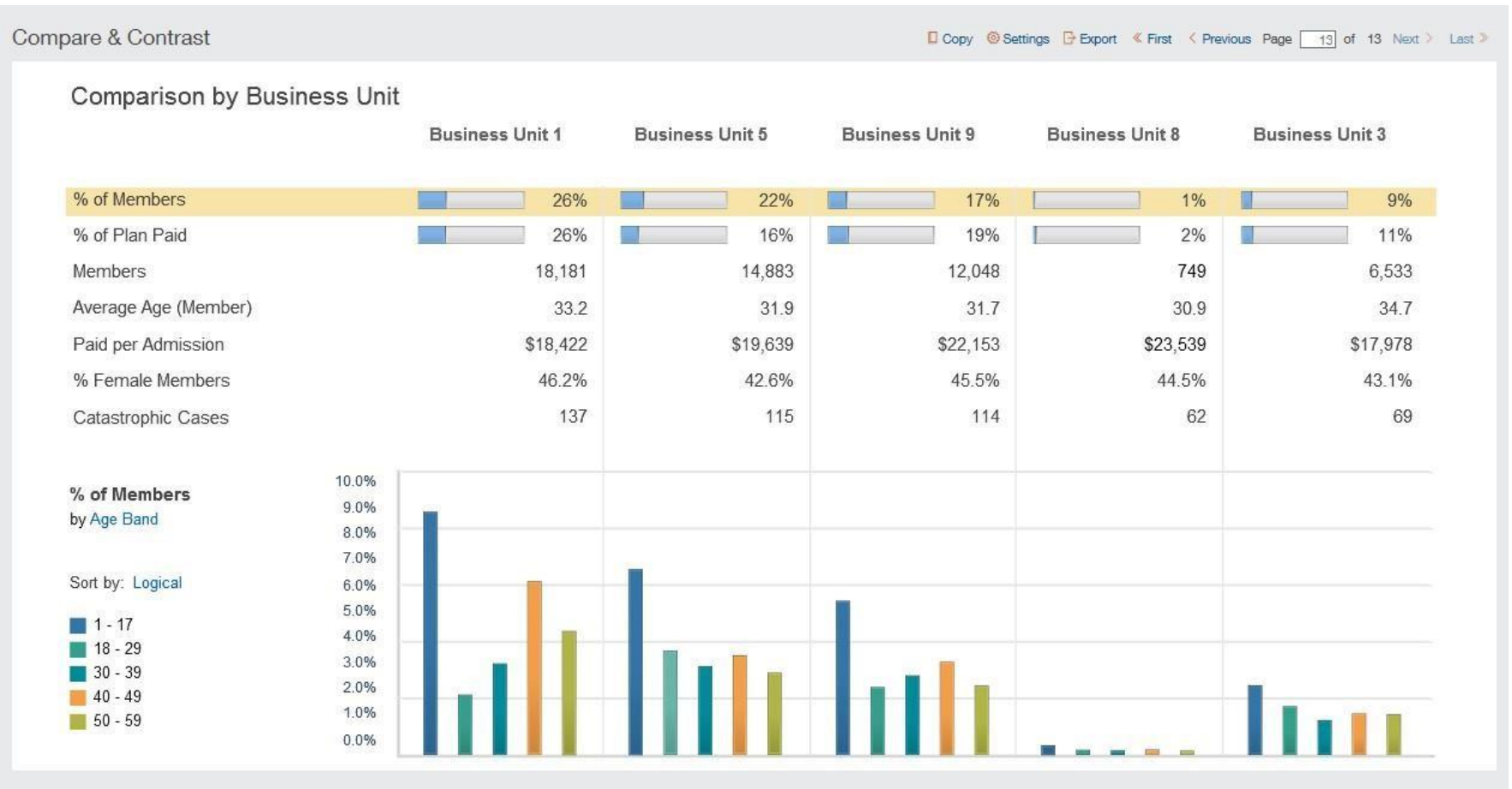


OPTUM®

Can display up to 90 measures and export to Microsoft Excel

Compare and Contrast

Integrated key measures with population comparison



Drivers of Change

Identify trends due to cost or utilization by service category

Drivers of Change

[Copy](#)
[Export](#)
[Settings](#)
[First](#)
[Previous](#)
Page of 16
[Next](#)
[Last](#)

Summary Place of Service Description	Change		Current Units	Prior Units	Total Plan Paid PMPM			
					Current	Prior	Change Due to Volume	Change Due to Price
► Inpatient	<div><div></div></div>	11.1%	0.05	0.05	\$90.68	\$81.60	(\$2.09)	\$11.17
▼ Outpatient	<div><div></div></div>	4.8%	1.50	1.65	\$282.19	\$269.31	(\$25.64)	\$38.53
Emergency Room	<div><div></div></div>	4.4%	0.01	0.01	\$13.76	\$13.18	(\$0.88)	\$1.46
OP Care	<div><div></div></div>	24.8%	0.21	0.21	\$14.78	\$11.84	(\$0.10)	\$3.03
OP Facility	-5.4% <div><div></div></div>		0.01	0.02	\$23.71	\$25.07	(\$3.24)	\$1.88
OP Lab	<div><div></div></div>	4.3%	0.40	0.43	\$10.40	\$9.97	(\$0.79)	\$1.22
OP Pharmacy	<div><div></div></div>	11.2%	0.07	0.08	\$121.06	\$108.88	(\$9.57)	\$21.75
OP Radiation/Chemo	<div><div></div></div>	47.2%	0.01	0.01	\$7.49	\$5.09	\$1.24	\$1.16
OP Radiology	-4.6% <div><div></div></div>		0.16	0.16	\$17.71	\$18.58	(\$0.30)	(\$0.56)
OP Surgery	-7.1% <div><div></div></div>		0.06	0.10	\$12.27	\$13.21	(\$6.10)	\$5.17
Other OP	-1.1% <div><div></div></div>		0.15	0.16	\$37.80	\$38.23	(\$2.96)	\$2.53
Physician Office Visits	-8.0% <div><div></div></div>		0.41	0.46	\$22.77	\$24.75	(\$2.83)	\$0.85
Urgent Care	-16.1% <div><div></div></div>		0.01	0.01	\$0.43	\$0.51	(\$0.12)	\$0.03
Long Term Care	-8.8% <div><div></div></div>		0.00	0.00	\$0.73	\$0.80	(\$0.83)	\$0.76
Total		0.0%	0.0	0.0	\$0.00	\$0.00	(\$28.56)	\$50.45

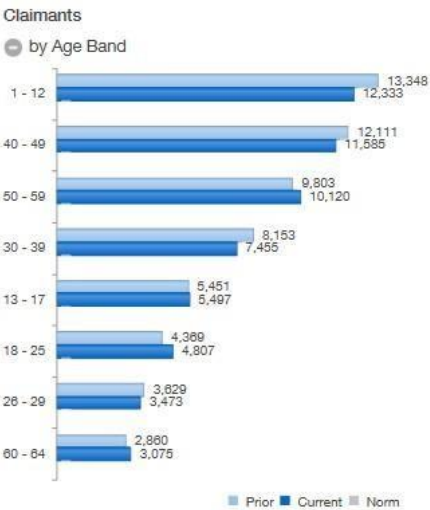
Details

Display segmentation of selected cost or utilization measure

Group Health Plan Performance Details

[Copy](#)
[Settings](#)
[Export](#)
[« First](#)
[< Previous](#)
Page of 26
[Next >](#)
[Last »](#)

Measure	Prior	Current	Change	Norm	Variance
Claimants	59,036	57,705	-2.3%	na	na
Benefits Utilization	85.4%	84.9%	-0.5 pts	90.2%	-5.3 pts
Retrospective Risk Score	1.052	0.000	-100.0%	1.846	-100.0%
Total Covered	\$323.36M	\$311.22M	-3.8%	na	na
Total Plan Paid	\$230.80M	\$225.33M	-2.4%	na	na
Total Plan Paid PMPY	\$3,337	\$3,314	-0.7%	\$5,134	-35.4%
Total Plan Paid PEPY	\$7,580	\$7,694	1.5%	\$10,105	-23.9%
Catastrophic Cases	232	0	-100.0%	na	na
% of Total Plan Paid (CC)	34.7%	0.0%	-34.7 pts	39.7%	-39.7 pts
Total Plan Paid (CC)	\$53.92M	\$0	-100.0%	na	na
Plan Cost Share (Net)	70.6%	71.3%	0.7 pts	na	na
Network Utilization	88.4%	89.2%	0.8 pts	93.1%	-3.9 pts



Additional Analytic Focus Areas

[Admission](#)
[Outpatient](#)
[Demographic](#)
[Pharmacy](#)
[Risk Adjusted](#)
[Catastrophic](#)
[Evidence Based Medicine](#)

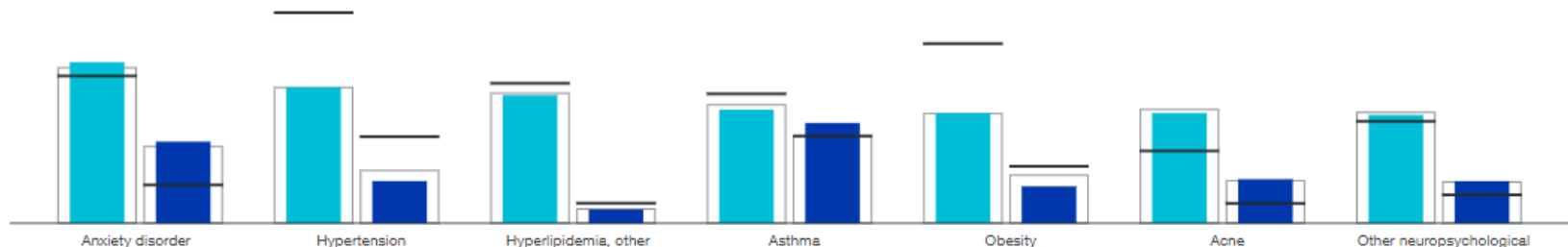
Distribution

Display cost and utilization distribution of sub-categories within attribute

Distribution

Type: by:

■ Current Prevalence ■ Current Episode Total Paid PMPM □ Prior — Norm



Category	Prevalence				Episode Total Paid PMPM			
	Prior	Current	Change	Norm	Prior	Current	Change	Norm
Anxiety disorder or phobias	8.3%	8.6%	0.3pts	7.8%	\$4.09	\$4.36	6.6%	\$2.01
Hypertension	7.2%	7.3%	0.1pts	13.6%	\$2.81	\$2.25	-19.9%	\$4.58
Hyperlipidemia, other	6.9%	6.8%	-0.1pts	7.4%	\$0.76	\$0.73	-3.9%	\$1.03
Asthma	6.3%	6.1%	-0.2pts	6.9%	\$4.68	\$5.35	14.3%	\$4.62
Obesity	5.9%	5.9%	0.0pts	12.0%	\$2.57	\$1.97	-23.3%	\$3.00
Acne	6.1%	5.9%	-0.2pts	3.8%	\$2.27	\$2.35	3.5%	\$1.02
Other neuropsychological or behavioral disorders	5.9%	5.8%	-0.1pts	5.4%	\$2.20	\$2.24	1.8%	\$1.48



Additional Analytic Focus Areas

Admission Outpatient Demographic Pharmacy Catastrophic Group Health

Top Providers

View top providers by Provider ID or Provider Name

Top Providers

[Copy](#)
[Settings](#)
[Export](#)
[« First](#)
[< Previous](#)
Page of 26
[Next >](#)
[Last »](#)

Top Providers by Provider ID by Plan Paid > All

Provider ID	Eligible Charges			Plan Paid			Discount		
	Prior	Current	Change	Prior	Current	Change	Prior	Current	Change
EY59544S2	\$10,128,456	\$10,606,331	4.7%	\$3,643,047	\$3,657,483	0.4%	\$5,533,431	\$5,888,566	6.4%
PR21491T7	\$4,809,634	\$5,657,234	17.6%	\$2,769,478	\$2,914,599	5.2%	\$1,702,065	\$2,396,415	40.8%
CI54375R6	\$6,173,676	\$7,227,188	17.1%	\$1,513,940	\$2,038,351	34.6%	\$3,015,871	\$3,879,140	28.6%
EI59583I2	\$4,148,381	\$4,823,363	16.3%	\$1,412,007	\$1,857,097	31.5%	\$1,654,113	\$2,730,900	65.1%
NE56646C0	\$3,591,748	\$3,648,298	1.6%	\$1,515,409	\$1,513,272	-0.1%	\$1,719,360	\$2,024,757	17.8%
CI54373C7	\$4,688,209	\$3,639,677	-22.4%	\$1,747,231	\$1,375,632	-21.3%	\$2,276,586	\$1,790,447	-21.4%
PR34381Y3	\$2,196,006	\$2,048,169	-6.7%	\$1,370,089	\$1,236,965	-9.7%	\$660,729	\$675,855	2.3%
PR25939C9	\$1,760,643	\$2,269,642	28.9%	\$946,675	\$1,190,805	25.8%	\$638,445	\$861,233	34.9%
SL14457N5	\$2,081,433	\$2,780,357	33.6%	\$805,840	\$1,183,407	46.9%	\$969,105	\$1,378,198	42.2%
PY20342S9	\$5,559,297	\$6,411,705	15.3%	\$1,138,100	\$1,150,420	1.1%	\$4,000,749	\$4,824,464	20.6%
EY15462J3	\$2,249,562	\$2,841,785	26.3%	\$724,317	\$1,083,276	49.6%	\$1,222,306	\$1,265,135	3.5%
EY20706A2	\$2,455,974	\$2,492,768	1.5%	\$883,556	\$921,885	4.3%	\$1,008,879	\$909,931	-9.8%
EY15024N5	\$2,471,713	\$1,589,242	-35.7%	\$1,633,412	\$884,838	-45.8%	\$702,576	\$548,339	-22.0%
EY20729C4	\$2,947,273	\$2,061,623	-30.0%	\$933,260	\$882,946	-5.4%	\$1,345,885	\$1,032,564	-23.3%
PR60955N0	\$1,963,912	\$2,437,073	24.1%	\$672,908	\$855,380	27.1%	\$1,179,550	\$1,441,372	22.2%
EY15462I6	\$1,748,053	\$2,476,414	41.7%	\$569,699	\$847,524	48.8%	\$841,401	\$1,224,580	45.5%
SB27703U8	\$2,445,546	\$2,817,547	15.2%	\$809,186	\$836,789	3.4%	\$1,477,632	\$1,655,061	12.0%
PL19401F0	\$2,729,435	\$2,589,538	-5.1%	\$1,042,194	\$813,969	-21.9%	\$1,615,423	\$1,684,465	4.3%
NE37321N9	\$483,811	\$1,575,502	225.6%	\$200,068	\$786,524	293.1%	\$259,747	\$757,396	191.6%
CR17085T5	\$1,236,953	\$1,395,075	12.8%	\$581,496	\$782,779	34.6%	\$616,448	\$538,386	-12.7%
Top 20	\$65,869,715	\$71,388,531	8.4%	\$24,911,912	\$26,813,941	7.6%	\$32,440,301	\$37,507,204	15.6%
All Other	\$436,381,528	\$430,517,694	-1.3%	\$171,181,095	\$159,813,145	-6.6%	\$191,962,324	\$202,710,451	5.6%
Total	\$502,251,243	\$501,906,225	-0.1%	\$196,093,007	\$186,627,086	-4.8%	\$224,402,625	\$240,217,656	7.0%



Additional Analytic Focus Areas

Provider Specialty Group

Network Indicator

Provider Participation Status

Facility

Non-Facility

© 2021 Optum, Inc. All rights reserved.

Top Drugs

View top drugs by Drug Name or Therapeutic Class

Top Drugs

[Copy](#) [Export](#)

Top Drugs by Drug Name by Pharmacy Plan Paid > All > Specialty

Drug Name	% of Pharmacy Plan Paid			Prescriptions		
	Prior	Current	Change	Prior	Current	Change
HUMIRA(CF) PEN	1.7%	5.1%	3.4 pts	160	478	198.8%
STELARA	3.2%	4.6%	1.4 pts	131	181	38.2%
HUMIRA PEN	4.8%	2.0%	-2.8 pts	498	194	-61.0%
TRIKAFTA	0.0%	1.8%	0.0 pts	0	43	0.0%
TRUVADA	2.4%	1.7%	-0.7 pts	900	643	-28.6%
ENBREL SURECLICK	1.8%	1.7%	-0.1 pts	189	146	-22.8%
DUPIXENT SYRINGE	1.1%	1.6%	0.5 pts	228	341	49.6%
TECFIDERA	1.4%	1.2%	-0.2 pts	111	91	-18.0%
XYREM	1.1%	1.1%	0.0 pts	55	49	-10.9%
NUTROPIN AQ NUSPIN	1.0%	1.1%	0.1 pts	120	117	-2.5%
STRENSIQ	0.0%	1.0%	0.0 pts	0	12	0.0%
GILENYA	0.9%	1.0%	0.1 pts	68	74	8.8%
IBRANCE	1.5%	0.9%	-0.6 pts	83	54	-34.9%
GONAL-F RFF REDI-JECT	1.3%	0.9%	-0.4 pts	170	130	-23.5%
MENOPUR	0.8%	0.9%	0.1 pts	158	194	22.8%
REVLIMID	1.1%	0.9%	-0.2 pts	47	39	-17.0%
OTEZLA	0.7%	0.8%	0.1 pts	134	162	20.9%
COSENTYX PEN (2 PENS)	0.9%	0.8%	-0.1 pts	80	85	6.3%
COPAXONE	1.2%	0.8%	-0.4 pts	103	77	-25.2%
TALTZ AUTOINJECTOR	0.6%	0.8%	0.2 pts	59	83	40.7%
Top 20	27.5%	30.9%	3.4 pts	3,294	3,193	-3.1%
All Other	25.4%	26.8%	1.4 pts	3,819	4,539	18.9%
Total	52.8%	57.7%	4.9 pts	7,113	7,732	8.7%

Additional Analytic Focus Areas

[All Drugs](#) [Non-Specialty](#) [Mail Order](#) [Retail](#) [Generic Indicator](#)



Additional Results

Health Survey, Health and Wellness Programs,
Disability and Worker's Compensation

Health Survey Compare and Contrast

Integrated key measure population comparison

Health Survey Compare and Contrast

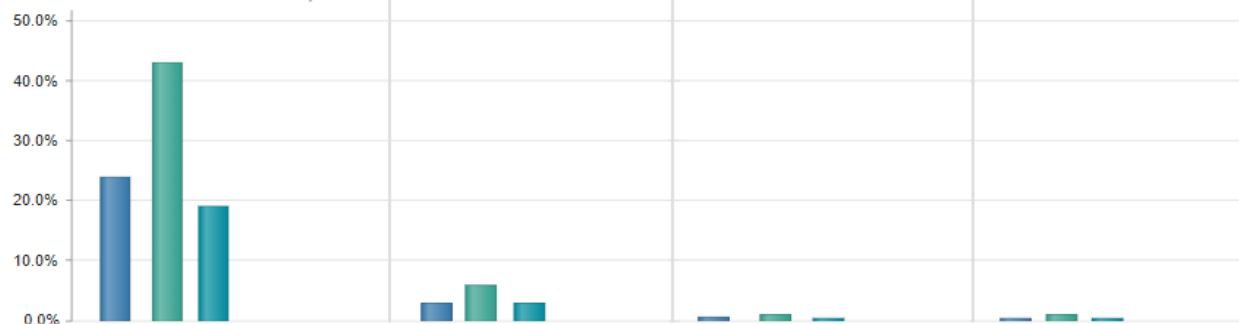
Comparison by Product

	HDHP	EPO	HMO	PPO
% of Members	<div><div></div></div> 82%	<div><div></div></div> 11%	<div><div></div></div> 2%	<div><div></div></div> 2%
% of Paid	<div><div></div></div> 86%	<div><div></div></div> 10%	<div><div></div></div> 0%	<div><div></div></div> 2%
Retrospective Risk Score	1.573	1.497	0.104	1.754
Plan Paid per Claimant	\$5,089	\$3,803	\$170	\$5,224
Pharmacy Plan Paid per Claimant	\$1,419	\$827	\$0	\$1,951
Office Visits PMPY	5.3	5.4	0	6.3
STD Active Cases	5,577	759	151	121

% Survey Members by HS Risk Group

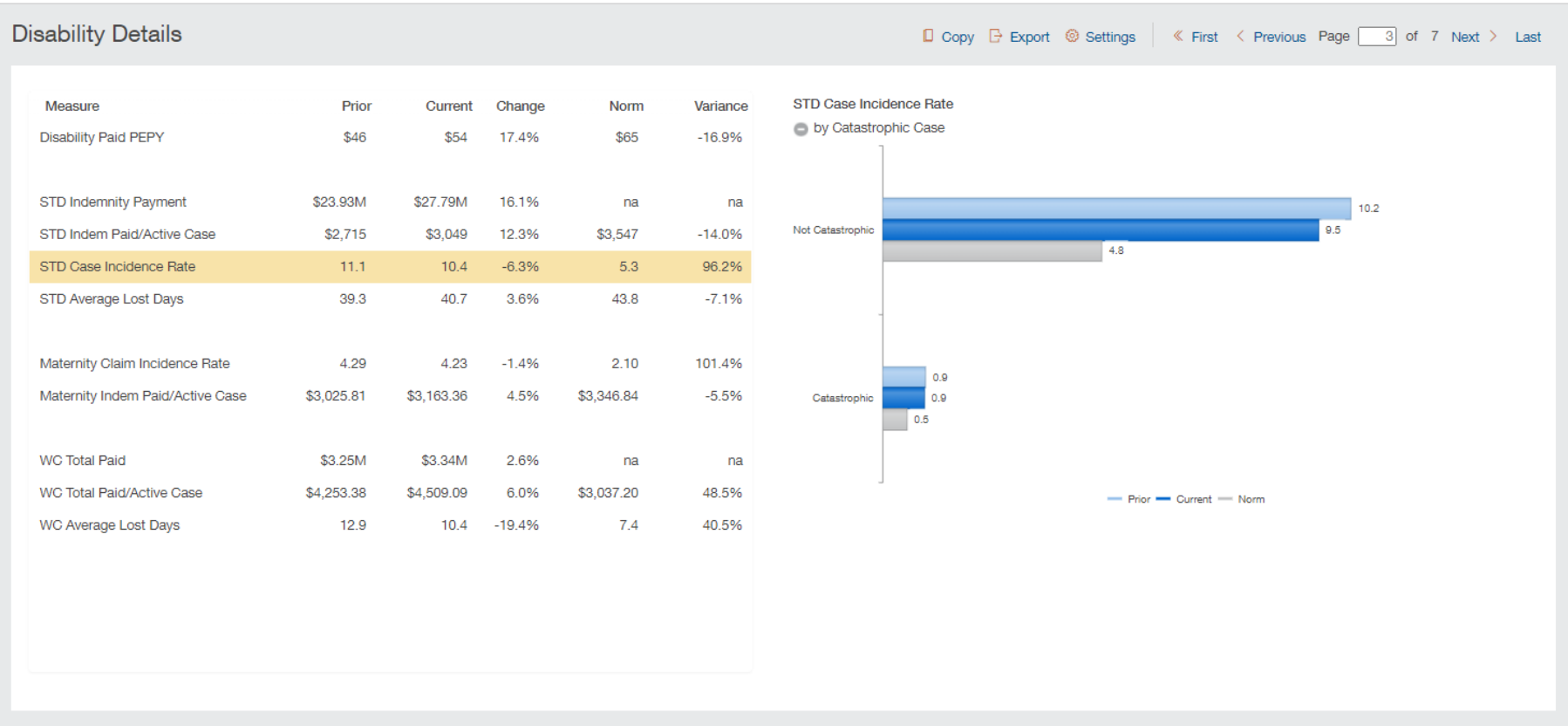
Sort By: Logical

- Low (0-2 Risks)
- Moderate (3-4 Risks)
- High (5 or More Risks)



Details

Display segmentation of a selected cost, incidence or lost time measure



Additional Analytic Focus Areas

Dental
STD/LTD Demographic
Worker’s Compensation Demographic

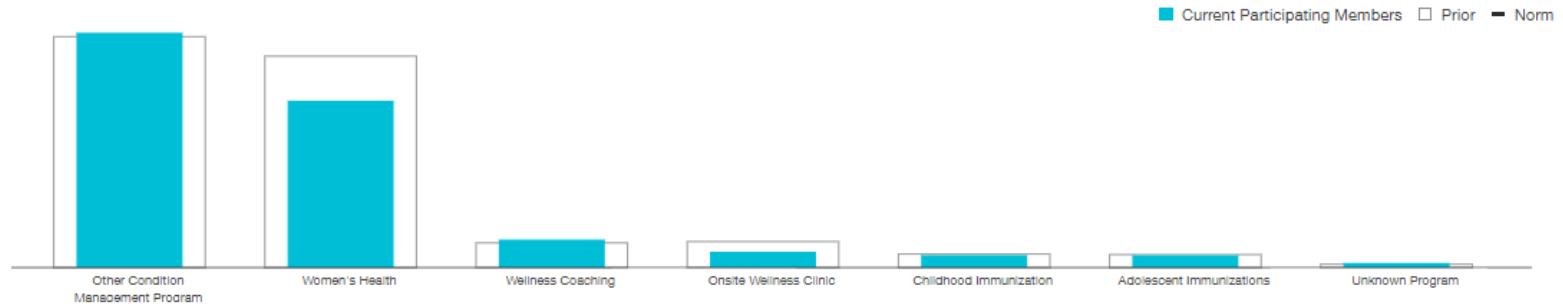
Distribution

Display cost and utilization distribution of sub-categories within attribute

Distribution - Limited

Type: Program Management Measures

by: Program



Category	Participating Members			
	Prior	Current	Change	Norm
Other Condition Management Program	27,444	27,916	1.7%	NA
Women's Health	25,119	19,832	-21.0%	NA
Wellness Coaching	2,929	3,324	13.5%	NA
Onsite Wellness Clinic	3,087	1,870	-39.4%	NA
Childhood Immunization	1,602	1,474	-8.0%	NA
Adolescent Immunizations	1,542	1,450	-6.0%	NA
Unknown Program	395	548	38.7%	NA

